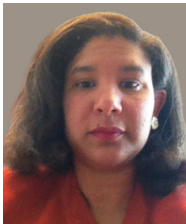


Claims Team

Professional Lines

Our claims philosophy

QBE is committed to responsible claims management and quality customer service. Our in-house, dedicated professional lines claims team has the industry specialization and product expertise to pay claims quickly and efficiently. Our customers can count on our commitment to superior service, both pre-loss and post loss.

**Shauna Reeder**

Vice President, Professional Liability Claims
212.601.6826 • shauna.reeder@us.qbe.com

Shauna Reeder is the Vice President, Professional Liability for QBE North America. In this role, she is responsible for claim oversight and manages a team of claims professionals for several professional liability programs within QBE's Financial Lines Programs division. Shauna's team manages the following E&O programs: architects and engineers, lawyers, mortgage brokers and title agents, and collection agencies. Prior to joining QBE, she held management positions at another insurance company leading teams that adjusted high exposure professional liability claims against lawyers, architects and engineers, accountants and miscellaneous professionals. She served on the ABA Standing Committee on Lawyers Professional Liability from 2015-2018. Prior to becoming an insurance professional, Shauna was a trial lawyer at various insurance defense firms in New York City and began her legal career as an Assistant Corporation Counsel at the New York City Law Department. Shauna earned a Bachelor of Arts degree from Brown University and a Juris Doctorate from Brooklyn Law School.

**Lindsey Lawrence**

Assistant Vice President, Program Claims
972.398.8502 • lindsey.lawrence@us.qbe.com

Lindsey Lawrence is an Assistant Vice President leading the Programs Claims team. Since joining QBE, she has handled professional liability claims for a wide variety of programs, including accountants, architects and engineers, long-term care professionals, title agents, credit and collection professionals, and claims on our lawyers' program since its inception. Prior to joining QBE, Lindsey spent 10 years in private law practice focused on insurance coverage and litigation in both state and federal court. In 2017, Lindsey was named a Texas Super Lawyers Rising Star for Insurance Coverage. Her practice involved a variety of claims, including construction defects, property damage, employee injury, oil and gas industry claims, and catastrophic losses. Lindsey earned a Bachelor of Arts degree from the University of Texas at Austin, with a dual major in the Plan II Honors Program and Russian, East European and Eurasian Studies, and a Juris Doctorate from the Southern Methodist University Dedman School of Law.

**Ted Turner**

Senior Claims Technical Specialist
312.803.3956 • james.turner@us.qbe.com

Ted Turner is a Senior Claims Technical Specialist for QBE North America. He is responsible for handling professional liability claims involving lawyers, architects, engineers and accountants. Prior to joining QBE, Ted was a Claims Counsel for 13 years with Great American Insurance Company, XL Catlin, and Chubb, handling professional and fiduciary claims. Ted practiced law for 16 years with Gollaher and Chambers and Thompson, Coe, Cousins, and Irons, defending a variety of professionals in state and federal court. He also litigated underinsured and uninsured motorist claims. He provided coverage opinions and litigated coverage matters in the areas of professional, commercial and property insurance. Ted earned a Bachelor of Arts from Southwestern University with an emphasis in accounting and a Juris Doctorate Degree from Baylor University.

Claims Team Professional Lines



Nhataly Vu

Senior Claims Technical Specialist

972.398.8557 • nhatalyvu@us.qbe.com

Nhataly Vu is a Senior Claims Technical Specialist for QBE North America. She is a claims attorney handling claims on several programs including architects and engineers, lawyers and title agents. Prior to joining QBE, Nhataly was an insurance defense attorney for 16 years. Nhataly's private practice focused on the defense of architects and engineers, as well as commercial and residential developers in all phases of litigation, including mediations, settlement conferences and trial. Nhataly has trial experience and experience evaluating coverage issues involving professional liability, commercial general liability and excess liability. Nhataly has been a guest speaker at the University of California, Irvine School of Law and California State University, Long Beach. Nhataly earned a Bachelor of Arts degree in Political Science and English from Mount St. Mary's University and a Juris Doctorate from Pepperdine University.



Brooke Mixon

Senior Claims Technical Specialist

972.664.7031 | brooke.mixon@us.qbe.com

Brooke Mixon is a Senior Claims Technical Specialist for QBE North America. She is responsible for handling professional liability claims involving lawyers, title agents and mortgage company professionals, collections professionals, and architects and engineers. Brooke has been with QBE since 2016 and previously provided TPA oversight on Public Entity Programs claims. Before joining QBE, Brooke practiced law in the Dallas-Fort Worth area for several years, primarily handling complex probate matters. Brooke earned a Bachelor of Arts degree in English Literature from the University of Texas at Austin and a Juris Doctorate from Texas Wesleyan University School of Law.



Benjamin Schulman

Senior Claims Technical Specialist

770.933.5148 | benjamin.schulman@us.qbe.com

Ben Schulman is a Senior Claims Technical Specialist for QBE North America. He is responsible for handling professional liability claims involving lawyers, architects and engineers, and title agents. Prior to joining QBE, Ben was a Professional Liability Claims Adjuster for over four years working on Public Entity Programs, and handling Public Officials and Employment Liability, Law Enforcement Liability, School Leaders E&O, and Educators Legal & Employment Liability. Before becoming an attorney, Ben worked as a chef for over ten years in Philadelphia, Atlantic City, and New York City, culminating in his work in the kitchen of Jean-Georges—a restaurant that has been awarded Three Stars from the Michelin Guide and Four Stars from the New York Times. Ben earned a Bachelor of Arts degree in Philosophy from Temple University and a Juris Doctorate from Temple University Beasley School of Law.



Ashley Sutton

Senior Claims Technical Specialist

972.664.7036 | ashley.sutton@us.qbe.com

Ashley Sutton is a Senior Claims Technical Specialist for QBE North America. She is responsible for handling professional liability claims involving lawyers, architects and engineers, mortgage company professionals, and title agents. Ashley has been with QBE for eight years and has provided TPA technical oversight on Commercial General Liability, Commercial Automobile, Public Officials & Employment Liability, School Leaders E&O, and Educators Legal & Employment Liability. Prior to QBE, Ashley held management positions within the insurance industry and was responsible for evaluating complex coverage issues and handling all phases of claims litigation, including mediation, trial, and appeals. Ashley has a Bachelor of Arts in Economics with a Concentration in Law from Trinity University in San Antonio, Texas.